

*69th Annual
Birmingham Rose Show*



Birmingham Botanical Gardens

May 13th & 14th, 2023

BirminghamRose.org



Open Monday - Friday 8am - 6pm

Saturday 8am - 4pm

(205) 640-5891

1009 Old Cedar Grove Rd.

Leeds, AL 35094



drift®

GROUNDCOVER ROSES
MADE EASY

the
knock out®
family of roses

star®

ROSES and PLANTS

The Birmingham Rose Society
69th Annual Rose Show
May 13th & 14th, 2023

Birmingham Botanical Gardens

Entries Received Saturday - 6:00 until 10:00 am
Judging - Saturday 10:00 am

Rose Show Open to the Public

Saturday 1:00 - 5:00 pm
Sunday 1:00 - 4pm

BIRMINGHAM ROSE SOCIETY 2022 - 2023 OFFICERS

President - Bobby Babb
1st Vice President - Jill Haisten
2nd Vice President - Jennifer Phillips
Recording Secretary - George Ann Hamilton
Treasurer - Harold Neumeier
Director - Harold Settle
Director - Sharon Bamberg
Director - Elizabeth Coleman



HANNA'S

garden shop

EXPERTISE TO GROW ON.

Open Monday - Friday • 8am until 6pm

Saturday 8am until 5pm

Sunday 11am until 5pm

205 - 991 - 2939



Welcome to the 69th Annual Birmingham Rose Show presented by the Birmingham Rose Society on Mother's Day weekend at the beautiful Birmingham Botanical Gardens. Mother's Day weekend has been the traditional weekend for the show, partially because it is usually good timing for the first and best blooms for roses in our area.

The beauty of the rose will be exhibited in numerous varieties, colors, and forms- hybrid teas, grandifloras, floribundas, shrubs, polyanthas, old garden roses, climbers, miniatures and minifloras. They are all unique and beautiful. The most coveted award is the Queen of Show, judged as the best overall bloom, stem and foliage from the Hybrid Tea-Grandiflora category. You will find her on the top tier in the center of the awards table in the center of the auditorium. Other award winners will line the table with their prizes adjacent to them.

The arrangements section is always a favorite attraction, and this year they will follow the theme "Roses Go to National Parks". You will find arrangements that are Traditional, Modern, East Asian, Table settings, and other special classes including Novice and Junior.

The photography exhibit and judging will be in the lobby. Check out the photos for the various categories. Getting to photograph your roses is another reason to grow them. With the advancement in cameras in recent years, photography competition has become competitive at the national level, and it trickles down.

Our society exists "to increase the general interest in cultivation and improve the standard of excellence of the rose for all people." This is our mission statement, and as it indicates, we want more people to enjoy growing roses as we do and we are willing to help. The American Rose Society is divided into districts and local societies such as our BRS. This gives us excellent educational opportunities through magazines, consulting rosarian training, and attending rose shows and conferences. Our local BRS has monthly meetings, either lecture-demonstration programs at BBG, pruning Dunn Formal Rose Garden, or garden visits. We welcome any and all who have an interest in roses to join our BRS.



Bobby

Birmingham Rose Society

Rose Show

Saturday & Sunday, May 13th & 14h, 2023

Birmingham Botanical Gardens

2023 ROSE SHOW COMMITTEES

SHOW CHAIRMAN: _____ **BOBBY BABB**
CO-CHAIRMAN : _____ **ELIZABETH COLEMAN**
FINANCE: _____ **HAROLD NEUMEIER**
SCHEDULE, HORTICULTURE: _____ **ELIZABETH COLEMAN**
SCHEDULE ARRANGEMENTS: _____ **JENNIFER PHILLIPS**
SCHEDULE PHOTOGRAPHY: _____ **CHARLES PRINCE**
STAGING AND PLACEMENT: _____ **STEPHEN BABB & CLAYTON RICHARD**
CALLIGRAPHY: _____ **CAROL RICHARD**
CLERKS: _____ **GEORGE ANN HAMILTON**
JUDGES: _____ **JILL HAISTEN**
JUDGES' COFFEE: _____ **JENNIFER PHILLIPS & SHARON BAMBERG**
JUDGES' LUNCHEON _____ **ELIZABETH COLEMAN**
ROSE SHOW ROSE SALES: _____ **BETTY BAMBERG, TONI NEUMEIER**
AWARDS TALLY: _____ **HEATH PADGETT & TREY HOFFMAN**
SET UP & DISMANTLING SHOW: _____ **ALL BRS MEMBERS**



AMERICAN ROSE SOCIETY CONSULTING ROSARIANS

The Birmingham Rose Society salutes our Consulting Rosarians for their dedicated service to Alabama's rose gardeners.

The following members of the Birmingham Rose Society, Inc. have been accredited by the American Rose Society as Consulting Rosarians. They and other members of the Society are available to speak at Garden Clubs and other meetings. If you need a speaker, contact the Birmingham Botanical Gardens and ask for the name and telephone number of the Birmingham Rose Society representative.

Bobby Babb

Sharon Bamberg

Elizabeth Coleman

Jill Haisten

George Ann Hamilton

Jennifer Phillips

Gloria Purnell

Harold Settle

CONSULTING ROSARIANS EMERITUS

Martha Eskew

Ann Jones

Mayre Parr

AMERICAN ROSE SOCIETY ACCREDITED ROSE JUDGES

Becoming an Accredited Judge of the American Rose Society (ARS) is a notable achievement for any rose grower. Every ARS Judge must achieve and maintain excellence in growing and exhibiting roses. Through an intensive training and apprentice program, each Judge is able to recognize the outstanding beauty and superior quality a rose can attain.

The following individuals are ARS Judges in the Birmingham Rose Society:

ACCREDITED HORTICULTURE JUDGES

Jill Haisten
Mayre Parr
Gloria Purnell

ACCREDITED ROSE ARRANGEMENT JUDGES

Jill Haisten
Mayre Parr

AMERICAN ROSE SOCIETY EMERITUS ROSE JUDGE

Mayre Parr

EMERITUS ARRANGEMENT JUDGE

Mayre Parr

Presidents of the Birmingham Rose Society

1950-1952	C. Price Underwood
1952-1954	H.F. Tillia
1954-1955	Marion Holt
1955-1956	Ed Gayford
1956-1958	Walter Houlditch
1958-1960	H.H. Hill
1960-1962	H.E. Archer
1962-1963	Robert Barnett
1963-1965	Estelle Edwards
1965-1968	Henry Hunt
1968-1970	Robert Barnett
1970-1972	Bill Harris
1972-1974	Lewis Hoffman
1974-1976	Robert Eskew
1976-1978	Sandy Nelson
1978-1980	Dick Coffee
1980-1982	Gay Orman
1982-1984	Robert Eskew
1984-1985	Margaret Phillips
1985-1986	Harry Murphy
1986-1988	Edward Smith, Jr.
1988-1990	Kent Manly
1990-1992	Danny Weaver
1992-1994	Jeff Freeman
1994-1996	Mayre Parr
1996-1997	Tom Brady
1997-1999	David McCoy
1999-2000	Azilee Adams
2000-2001	Robert Eskew
2001-2002	Jane Hinds
2002-2004	Martha Eskew
2004-2005	William Woods
2005-2007	Dean Hodge
2007-2008	Jane Hinds
2008-2010	Gloria Purnell
2010-2011	Frank Baier
2011-2013	Christopher VanCleave
2013-2015	Harold Settle
2015-2018	Sharon Bamberg
2018-2020	Elizabeth Coleman
2020-2022	Harold Settle
2022-2023	Bobby Babb

BIRMINGHAM ROSE SOCIETY
SHOW SCHEDULE
GENERAL RULES and INFORMATION:

1. This show will be governed by the standard rules and guidelines of the American Rose Society for Rose Shows. Only roses that are described in the latest editions of Modern Roses, Official List of Approved Exhibition Names for Exhibitors and Judges, Handbook for Selecting Roses, The Rose Registration column of the American Rose magazine and recent Rose Registrations on the ARS website may be entered in competition. In cases where a variety is not listed in any of the above ARS official publications, the Combined Rose List (CRL) may be used as a reference. If differences exist between the CRL and ARS publications, the ARS publication will prevail.
2. Competition is open to all rose growers except Judges judging this show. All entries must have been grown in the Exhibitor's private outdoor garden by the Exhibitor, entered by the Exhibitor, and be correctly named and classified. Only one person or team may enter from any one garden. Any such multiple entries will be disqualified.
3. All entries must be made between 6:00 a.m. and 10:30 a.m. All entries become the property of the Rose Show Committee.
4. Containers and entry tags will be furnished by the Show Committee except where specifically indicated. An entry tag must be made for each specimen, except collections shown in one container, which shall have one entry tag with all the varieties listed on the reverse. Both top and bottom of the tag must be filled out completely. Wedges are permitted, provided this material does not extend above the top of the vase.
5. Exhibitors may make as many entries as desired in each Section, except Division I, provided each entry is of a different variety.
6. Placement of entries will be done by the Placement Committee, except for Division I and Division III, Section L-Collections, which may be placed by the exhibitor. Once placed, the entry shall not be moved. NO ONE will be permitted in the show area during judging, except those authorized by the Show Chairman.
7. Except where otherwise specifically stated, varieties will be arranged alphabetically within a Section, disregarding color class.

8. Blue, Red and Yellow ribbons may be awarded in each variety class. Only blue ribbon winners may receive awards. Judges may withhold any award they feel is not merited. In addition to special awards, ARS Certificates will be awarded where merited. The decision of the Judges is final. Color dots may be used in lieu of ribbons.
9. The Judges evaluate each specimen in accordance with the following point system: FORM 25 points, COLOR 20 points, SUBSTANCE 15 points, STEM AND FOLIAGE 20 points, BALANCE AND PROPORTION 10 points, and SIZE 10 points.
10. Entries may be disqualified if the entry:
 - a) is misnamed, misclassified or unlabeled
 - b) contains a foreign substance applied to improve the appearance of the specimen;
 - c) is a specimen in violation of ARS or DSD rules;
 - d) displays the Exhibitor's name in any location other than the designated place on the entry tag.
11. One-bloom-per-stem Hybrid Teas and Grandifloras must be exhibited at exhibition stage, which is usually 1/2 to 3/4 open. Multiple-bloom Hybrid Teas, Grandiflora and Floribundas must have two or more blooms. Stem length and foliage should be in a pleasing proportion to the size of the bloom or spray.
12. Climbing Sports or bush-type roses and Climbing Hybrid Teas, Climbing Grandifloras, and Climbing Floribundas must be exhibited in the appropriate Section for their bush type counterparts.
13. No exhibit, certificate, ribbon or award will be removed prior to the close of the show. Awards not picked up by winners at the close of the show become the property of the Rose Show Committee. Ribbons other than Best in Class and Novice, Section "K" will be furnished to the winners only if request is made to the Awards Chair persons.
14. The Birmingham Rose Society does not assume any responsibility or liability for loss or damage to person or property in relation to this show.
15. Artist's Palettes and Rose "N" Crystal Bowls will be available on a first come basis. Exhibitors are permitted to furnish their own Artist's Palettes and Rose "N" Crystal Bowls if the Birmingham Rose Society supply is exhausted.

Horticulture Entries

Horticulture Entries

Division I

Section A Birmingham Rose Society Perpetual Challenge Class

Only one entry is allowed per exhibitor in this section. All awards remain on display at the Birmingham Botanical Gardens until needed for another show. Entries in this section are restricted to members of the Birmingham Rose Society.

Class 1

The Birmingham Rose Society Commemorative Trophy is presented to honor all members, past and present, who devoted their time and talents "to increase the general interest in cultivation and improve the standard of excellence of the rose for all people."

An entry of (3) Hybrid Teas and/or Grandifloras any combination, exhibition stage, no foliage, in goblets with separate entry tags is to be placed by the exhibitor. Once placed, the entry shall not be moved.

Division II

Exhibitors may make as many entries in each section as desired provided each entry is a different variety. Entries in the Division will be staged alphabetically by variety name. QUEEN, KING, PRINCESS and FOUR COURT OF HONOR winners will be selected from Section B, Class 2. ARS certificates will be awarded.

Section B Hybrid Teas, Climbing Hybrid Teas, Grandifloras and Climbing Grandifloras

Class 2 **One (1) specimen**, one-bloom per stem; exhibition stage

Class 3 One (1) specimen, one bloom per stem; non-exhibition stage garden rose; examples include but are not limited to Kordes roses, Meiland roses and similar varieties.

Section C Multiple Bloom Sprays

Class 4 **One (1) Hybrid Tea or Grandiflora** spray, two or more blooms

Class 5 **One (1) Polyantha** spray, two or more blooms

Section D Fully Open Bloom Hybrid Teas/Grandifloras

Class 6 **One (1) bloom** per stem, fully open, stamens fresh and easily visible

Section E Floribundas

Class 7 **One-bloom-per stem** Floribunda specimen. Each entry will be judged for the most perfect phase of possible beauty.

Class 8 **One (1) Multiple Bloom** Floribunda spray with two (2) or more blooms; **QUEEN, KING, PRINCESS** of Floribundas will be selected from this class.

Section F Climbers

Class 9 **One (1) specimen** may be exhibited naturally grown or disbudded. Only roses classified as climbers are allowed. All climbing Hybrid Teas, Climbing Grandifloras, and Climbing Floribundas are to be exhibited in their respective counterpart sections.

Section G Most Fragrant Rose

Class 10 **One (1) specimen**, any type, any variety may be exhibited at any stage of bloom that is most fragrant.

Section H Rose 'N' Crystal

Class 11 **One (1) specimen** Hybrid Tea or Grandiflora, **exhibition stage**, floated in a brandy snifter, no foliage is permitted.

Class 12 **One (1) specimen** Hybrid Tea or Grandiflora, **fully open**, floated in a brandy snifter, no foliage is permitted.

Class 13 One (1) specimen, Hybrid Tea or Grandiflora, non-exhibition stage garden variety similar to but not limited to varieties such as Kordes roses or Meiland roses.

Section I Old Garden Roses

One (1) specimen, naturally grown. Unwanted side growth may be removed subject to penalization. Each variety will be judged on its own merits. The best entry in the section of a variety introduced prior to 1867 will be eligible for the **Dowager Queen Award**. The best entry in the section of a variety introduced 1867 or later will be eligible for the **Victorian Award**.

Class 14 **Dowager Queen Award**: Variety introduced prior to 1867

Class 15 **Victorian Award**: Variety introduced 1867 or later

Section J Shrubs

One (1) specimen, naturally grown. Unwanted side growth may be removed subject to penalization. Each variety will be judged on its own merits.

Class 16 **Classic Shrubs** (Classic Shrub Roses are Shrub Roses classified as hybrid Kordesii, hybrid Moyesii, hybrid Musk, and hybrid Rugosa.)

Class 17 **Modern Shrubs**

Section K "NOVICE"

This section is limited to those exhibitors who have never won a blue ribbon in an American Rose Society sponsored Rose Show. Novices may enter other show sections also. The winner is eligible for the **Sally Bruner Novice Award**.

Class 18 One (1) specimen, one bloom, any variety of Hybrid Tea, Grandiflora, Floribunda, Climber, Old Garden Rose, Shrub, Miniature, or Miniflora, any stage of bloom, one entry tag.

Division III

Section I Collections

Entries in this Section shall be placed by the exhibitor. Once placed, the entry shall not be moved. **Oasis is not permitted in vases of collections.**

Class 19 Three (3) one bloom per stem specimens, **same variety of Hybrid Tea or Grandiflora**, exhibition stage, one container, one entry tag

Class 20 Three (3) one bloom per stem specimens. Three (3) **DIFFERENT Varieties of Hybrid Tea or Grandiflora**, exhibition stage, one container, one entry tag

Class 21 Five (5) one bloom per stem specimens, **any combination of Hybrid Tea or Grandiflora varieties**, exhibition stage, one container, one entry tag

Class 22 High/Low: one (1) bloom per stem **Hybrid Tea or Grandiflora** and one (1) bloom per stem **Miniature or Miniflora**, matching in color and form, exhibition stage, separate containers, one entry tag, Mini/MF staged in front of HT/GF

Class 23 Three (3) **Floribunda or Polyantha Sprays**, any combination of varieties, separate containers with individual entry tags

Class 24 Nine (9) one bloom per stem specimens, any combination of Hybrid Tea or Grandiflora varieties, **exhibition stage**, one container, one entry tag

Class 25 Three (3) Hybrid Teas or (3) Grandifloras, one bloom per stem, any combination of **non-exhibition stage garden roses** such as Kordes roses, Meiland roses or other similar varieties, one container, one entry tag. Hybrid Teas and Grandifloras may not be mixed together.

Class 26 Three (3) Hybrid Teas or (3) Grandifloras, any combination of varieties, one bloom per stem, **fully open**, one container, one entry tag. Hybrid Teas and Grandifloras may not be mixed together

Class 27 Cycle of Bloom: Three (3) Hybrid Teas or (3) Grandifloras, same variety, showing three stages of bloom; one bud with sepals down and petals starting to unfurl; one bloom at exhibition stage, and one bloom fully open; exhibited in separate container with individual entry tags.

Class 28 Three (3) Climbers, any variety, any stage of bloom, one container, one entry tag

Class 29 Three (3) **David Austin** roses, any variety, most beautiful phase of bloom, one container, one entry tag

Class 30 Three (3) **Shrub** roses, any variety, any form, one container, one entry tag

Class 31 An entry of One (1) or Three (3) **Drift roses, any variety, any form, one container, one entry tag**

Section M Artist's Palette

Class 32 Five (5) **different varieties of Floribunda** blooms at their most perfect phase of beauty, one entry tag

Class 33 Five (5) **different varieties of Miniatures or five (5) different varieties of Miniflora** blooms at their most perfect phase of beauty, one entry tag; **entries must be of the same class, either all miniature or all miniflora blooms.**

Division IV

Miniatures

Section N Miniatures

Exhibitors may make as many entries in this section as desired, provided each entry is of a different variety. Entries in the Division will be staged alphabetically by variety name. **QUEEN, KING, PRINCESS, and FOUR COURT of HONOR.** Miniature winners will be selected from Section N, Class 34

Class 34 One (1) bloom per stem **Miniature** specimen, exhibition stage

Class 35 One (1) bloom per stem **Miniature** specimen, fully open

Section O Multiple Bloom Sprays

Class 36 One (1) multi-bloom **Miniature** specimen with two or more blooms

Section P Collections

Class 37 Three (3) one bloom per stem **Miniature specimens, SAME variety**, exhibition stage, one container, one entry tag

Class 38 Three (3) one bloom per stem **Miniature specimens, DIFFERENT varieties**, exhibition stage, one container, one entry tag

Class 39 Three (3) specimen **Miniature** sprays, **any combination of varieties**, each with two or more blooms, separate containers, separate entry tags

Class 40 Five (5) **Miniature** specimens, **any combination of varieties**, one bloom per stem, exhibition stage, one container, one entry tag

Class 41 **Cycle of Bloom:** Three (3) **Miniature** specimens, **same variety**, showing three (3) stages of bloom, one bud with sepals down and petals starting to unfurl, one bloom at exhibition stage, and one bloom fully open; exhibited in separate containers with separate entry tags

Class 42 Twelve (12) **Miniature** specimens, **any combination of varieties**, one bloom per stem, one container, one entry tag

Section Q Rose 'N' Crystal

Class 43 Rose 'N' Crystal: One **Miniature specimen**, no foliage, floating in a bowl, **exhibition stage**

Class 44 Rose 'N' Crystal: One **Miniature specimen**, no foliage, floating in a bowl, **fully open**

Section R Basket

Class 45 Basket: Any combination of Miniature varieties; basket to be provided by exhibitor and not to exceed 12" in size, exhibitor may use oasis, one entry tag.

Division V

Minifloras

Section S Minifloras Exhibitors may make as many entries in this section as desired, provided each entry is of a different variety. Entries in the Division will be staged alphabetically by variety name. QUEEN, KING, PRINCESS AND FOUR COURT OF HONOR Minifloras will be selected from Section S, Class 46.

Class 46 One (1) bloom per stem **Miniflora** specimen, exhibition stage

Class 47 One (1) bloom per stem **Miniflora** specimen, fully open

Section T Multiple Bloom Sprays

Class 48 One multi-bloom **Miniflora** specimen with two or more blooms

Section U Collections

Class 49 Three (3) one bloom per stem **Miniflora** specimens, **SAME variety**, exhibition stage, one container, one entry tag

Class 50 Three (3) one bloom per stem **Miniflora** specimens, **DIFFERENT varieties**, exhibition stage, one container, one entry tag

Class 51 Three (3) specimen **Miniflora** sprays, any combination of varieties, each with two or more blooms, separate containers, separate entry tags

Class 52 Five (5) **Miniflora** specimens, **any combination of varieties**, one bloom per stem, exhibition stage, one container, one entry tag

Class 53 Cycle of Bloom: Three (3) **Miniflora** specimens, **same variety**, showing three (3) stages of bloom, one bud with sepals down and petals starting to unfurl, one bloom at exhibition stage, one bloom fully open; exhibited in separate containers with separate entry tags

Class 54 Twelve (12) **Miniflora** specimens, **any combination of varieties**, one bloom per stem, one container, one entry tag

Section V Rose 'N' Crystal

Class 55 Rose 'N' Crystal: One **Miniflora** specimen, no foliage, floating in a bowl, **exhibition stage**

Class 56 Rose 'N' Crystal: One **Miniflora** specimen, no foliage, floating in a bowl, **fully open**

Section W Basket

Class 57 Basket: Any combination of **Miniflora** varieties; basket to be provided by exhibitor and not to exceed 12" in size, exhibitor may use oasis, one entry tag

Division VI

Challenge Classes

Section X Judges Challenge

Class 58 Collection of three (3) rose specimens, **any combination of varieties**, in one container, one entry tag, varieties listed on back of entry tag

Section Y Earth Kind Rose Challenge

Earth Kind Roses* are Belinda's Dream, Caldwell Pink, Carefree Beauty, Cecile Brunner, Climbing Pinkie, Ducher, Duchesse de Brabant, Else Poulsen, Georgetown Tea, Knock Out, La Marne, Madame Antoine Mari, Marie Daly, Mutabilis, New Dawn, Perle d'Or, Reve d'Or, Sea Foam, Souvenir de St. Anne's, Spice, The Fairy

*per Texas A&M Earth-Kind Rose Cultivars List

Class 59 One (1) specimen, any stage, one container, one entry tag

Class 60 Collection of three (3) specimens, any stage, **any combination of varieties**, in one container, one entry tag, varieties listed on back of tag

BEST IN SHOW certificate will be awarded to one of the Best in Class winners.

BIRMINGHAM ROSE SHOW

DIVISION II – ARRANGEMENTS

Rules and Requirements

Exhibitors

Exhibitors must be registered for this show to be eligible to submit entries. The exhibitor may enter multiple classes but may make only one entry in each class. More than one exhibitor from the same garden may enter the same class.

All exhibitors must pre-register their entries with Jennifer Phillips at 205-542-0902 or email to jensp5@yahoo.com

Entries may be placed in assigned spaces on Friday night, 5/12 after setup or Saturday May 13 from 6:00 AM-10:00 PM.

Entry tags will be provided and both portions must be completed.

Arrangements should be assembled outside the show area as much as possible, with only final placements of components occurring in the assigned exhibit space.

Tables will be covered with a white cover and exhibitors are encouraged to use a background niche and/or underlay which must fit the width allowance, specified to the schedule. All standard Arrangements will be

staged in a space 32" wide and 30" deep, no height restrictions, unless otherwise stated in the schedule. Miniature arrangements will be staged in a space 10" high, 10" wide and 10" deep unless otherwise stated in the schedule.

Miniature arrangements will be judged at eye level and may not exceed 10" in height, width or depth. All roses used in miniature arrangements must be classified as Miniature and/or Mini-Flora.

SHOW RULES

The rules for this show are in accordance with ARS rules and practice and by entering this show you agree to abide by these rules.

1. All roses must be outdoor grown and be of high quality.
2. A rose or roses must be the most dominant flower in all arrangements.
3. The ARS approved exhibition name of all roses in each arrangement must be written on the entry tag.
4. "AG" MUST be checked or written on the entry tag if roses are arranger-grown so that entry will be eligible for ARS Medal Certificate.
5. Accessories are allowed unless stated otherwise in the schedule.
6. Flowers other than roses, and dried and/or treated dried plant material are allowed unless prohibited by the schedule
7. A card of intent may be included with an arrangement as an explanation of the arranger's interpretation of the theme or class title, unless the schedule specifically forbids it.
8. An arrangement incorrectly placed in a class will be judged in the class in which it is placed. All entries must be the work of the exhibitor.
9. No one but the exhibitor may touch or move an arrangement with one exception. (When the arranger can't be located, the Arrangement Chair may carefully move the arrangement.

Infringement of the following rules will result in severe penalty.

- 1. Painted or dyed fresh plant material, and live creatures are not allowed.**
- 2. The use of plant material on state or local conservation lists is not permitted.**
- 3. The American flag or flag of any country may not be used in an arrangement or as a decoration in any way.**

Reason for Disqualification

- 1. Roses not outdoor grown.**
- 2. Use of artificial plant material.**

Scorecard for Judging Arrangements

Conformance (5 points per Category – 15 points)

- A. Naming of roses**
- B. Conformance to type of design**
- C. Other specific requirements of schedule**

Design (5 points per Category – 30 points)

Balance, dominance, contrast, rhythm, proportion, scale

Perfection of the Rose(s) – 30 points

Including condition of other plant material

Creativity and Expressiveness – 15 points

Distinction – 10 points

Uniqueness, sets the design apart, superiority in every respect, technical execution/construction.

Total 100 Points

CHARACTERISTICS OF DESIGN

Traditional Design

In traditional designs lines converge in a strong center of interest, a focal area. Forms progress logically in size and shape and there may be gradation of color. All traditional designs emphasize natural lines of growth. The focal area is near the point of emergence. Plant material may extend over the container's edge. Fresh plant materials and naturally dried line materials should not be obviously abstracted. Actual balance and visual balance are important.

Traditional Line

- Have height and some width, but very little depth except in the focal areas.
- Are open silhouettes in space.
- Have length, strength and beauty.
- Show movement in one direction.

Traditional Line Mass

- Dominant line has more plant material than a Line design
- May show gradual progression of bloom development
- Have length, width and depth
- Shows gradation of size and shape
- May show gradation of color, tint or shade
- Have some closed space

Traditional Mass

- Closed silhouette
- Uncrowded, but simple plant material arranged in an orderly pattern. Roses must be the dominate flowers.

- The use of unlike qualities or elements to emphasize difference. Contrast is achieved by the use of color, shapes and textures in any or all components
- Design structure is symmetrical
- Well developed focal area (not a bulls-eye)
- Gradation of colors (light to dark) and/or size of forms (Small to large), if applicable.

Modern Arrangements

In modern arrangements freedom is given to arrangers to express their ideas in creative designs where the keynote is simplicity with emphasis on color, form, texture and the all-important element of space. The arranger may contort, manipulate or abstract any plant material except the rose bloom(s). The arrangement need not have an observable container.

Stretch Designs

Stretch Designs are designs in two units, one smaller than the other, having a connective(S) which extends between the two units. Overall design concept gives appearance of a smaller design stretched as if pulling away from the larger portion.

Parallel Designs

Have two or more groupings of materials (using one or more containers as one unit). The groupings may be placed in any direction (vertical, horizontal or diagonal) to give continuity. All groupings must be parallel in direction. They must have negative space between groupings and appear as one arrangement.

Modern Freeform Designs

Modern Freeform Designs are irregular designs with a curving outline. They are inspired by nature and are non-geometric. Plant materials are used in a naturalistic way. These natural forms determine the pattern of the design. They may have more than one center of interest and more than one point of emergence.

Modern Mass Designs

Modern mass Designs are silhouettes without regular form or progression of bloom development .

Modern Line Designs

Modern Line Designs are dramatic Line designs using a minimum of plant material and distinguished from Traditional Line through the choice of material, container and spacing of roses (placed in a nontraditional manner).

Transparency Design

Designs in which depth is emphasized by some components seen through others. A lattice or netting or natural or manufactured material may be used.

In the Oriental Manner

Arrangements in the Oriental Manner show an appreciation of nature. A majority of Oriental arrangements are based on the asymmetrical triangle (exception: Freestyle). This visualized triangular structure consists of three main lines of different heights, and therefore represents that re-creation of nature in a container. General characteristics of all arrangements in the oriental manner:

- **Simplicity in construction and restraint in the use of plant material.**
- **Plant materials should be appropriate to the season.**
- **Fresh plant material should be used as it grows in nature and may sometimes have natural defects.**
- **An Oriental arrangement is viewed directly from the front as if “one is looking into a garden or scenic landscape”.**
- **The rose or roses should be instruments in “leading the viewer into the design” and be the dominant flower.**
- **Stem dimensions are visual guidelines to the overall design and no two stems are the same length.**

Moribana (low container or compote)

Designs have three main stems. First or main line should be approximately one and one-half the diameter, plus the depth of the container. The secondary line equaling two-thirds the length of the main line. The third line is approximately one-third of main stem in length.

Designs are vertical, slanting or cascading. The design should have depth—one-half to two-thirds of the container should show water.

Foliage must not hang or droop into the water or rest on the lip of the container.

The kenzan is totally submerged in water and is placed off center and does not need to be covered completely with the plant material although strategically placed material or stones may be added to enhance the arrangement.

Nageire – (Tall container)

- **Stem lengths same as low container or Moribana**
- **Other stems should be used sparingly to avoid cluster**
- **Designs are vertical, slanting or cascading**
- **Plant materials are permitted to rest on the lip of the container**
- **Any combination of seasonal plant materials may be used**
- **Only about one-half of the container's opening is filled**

Free Styles

- **The container is considered an important element of design, and therefore should relate to the design in shape, color, size and directional movement. Modern Oriental style containers are used.**
- **Asymmetrical triangle is not required but one should be aware of simplicity in construction, use of space, dominance, pattern and proportion.**
- **Other considerations are: Rose(s) mass of color, details of other plant materials, lines may be any combination of directions. Spaces open or closed, positive or negative.**
- **Shapes and colors are very important, as they help the arrangers to express their feelings, rose show themes or class titles.**

Table Designs

No flatware is allowed in any of the table classes, basic requirements are a dish for food, a vessel for drinking and a rose arrangement.

Exhibition Table

The exhibition table is totally non-practical, but displays elements suggestive of serving a meal. Basis requirements are a dish for food, a vessel for drinking and a rose arrangement. It allows that dishes may be stacked, suspended, placed on easels, etc. Napkins or other appointments may be grouped or presented in creative ways.

Functional Tables

The arrangement and accessories, should occupy between one-quarter and one-third of the table space. The arrangement for a functional table should be designed and placed so as not to hinder table conversation. Our tables are to be set for one person. All components of table: dishes, container, cloth, glasses, etc. should share a common and comfortable ambience, to be staged on a 30" round table 32" high. Table covering to be provided by the exhibitor.

Special Classes

Princess of Arrangement - Roses with Rose Foliage Only

Fresh roses with any part of the rosebush may be used including, but not limited to hips, canes (with or without foliage) and roots. No other plant materials are permitted. Design may be standard or miniature size as designated in the schedule. This class should be designer's choice of style, which must be stated on the entry tag. No accessories are permitted.

Duchess of Arrangements - Fresh Roses with Dried and/or Dried Treated Plant Material

Fresh roses and rose foliage with no other fresh plant material. Other required materials used must be dried and/or treated dried material. Design may be standard or miniature size as designated in the schedule. This class should be designer's choice of style, which must be stated on the entry tag. No accessories are permitted.

Duke of Arrangements - Fresh Roses any Type

Fresh roses any classification type with or without other fresh and/or dried plant material. This class is restricted to arrangements larger than 1 inch in height, width and depth as in or similar to miniature classes but must not exceed 20 inches in height, width or depth. Schedule shall specify size. This class should be designer's choice of style, which must be stated on the entry tag. No accessories are permitted.

Roses Go National Parks:

Section A: Traditional Arrangements-

Class 1: Mass: Shenandoah's Blue Ridge Mountains

Class 2: Line design: Appalachian Trail

To be staged on a 9" pedestal

Section B: Modern Arrangements-

Class 3: Parallel: The great trees of Sequoia National Park

Class 4: Stretch: The Northern and Southern Rims of the Grand Canyon

Section C: East Asian:

Class 5: Moribana: Jordan Pond of Acadia National Park

Class 6: Nageire: Yosemite Falls of Yosemite National Park

Section D: Table Arrangements-

Class 7: Functional Table: Laconte Lodge of The Great Smoky Mountains

Class 8: Exhibition Table: Big Bend's Starlight Theater

Section E: Special Classes (Designers choice)

Class 9: Eligible for ARS Princess Arrangements:

Haleakala National Park

Use roses with rose foliage only. Hips, canes (with or without foliage) and roots may be used.
No other material or accessories permitted.

Class 10: Eligible for ARS Duchess of Arrangements:

Acadia National Park

Fresh roses with dried and/or dried treated plant material

Class 11: Eligible for ARS Duke of Arrangements:

King's Canyon National Park

Fresh roses of any type. Not to exceed 20" in any direction, but larger than 10".

Class 12: Eligible for Best Novice Certificate:

America's 1st National Park - Yellowstone National Park
For those who have never won a blue ribbon in an ARS show.

Class 13: Eligible for Junior Arrangement Rosette:

Junior Ranger
Open to anyone under 17 years old.

Class 14: Judges: Park Ranger

Eligible for Judges of Arrangements Award.
Open to Horticulture and Arrangement Judges judging this show only.
To be judged by local arrangement judges.

Miniature Arrangements

All designs in Sections F thru I are restricted to miniature/mini-flora classed roses

Section F: Miniature Arrangements: Traditional Arrangements

Class 15: Mass - America's Smallest National Park - Hot Springs National Park

Class 16: Line - Cuyahoga Valley National Park's Brandy Wine Creek

Section H: Mini Modern Arrangements

Class 17: Transparency Arrangement - Redwoods
Not to exceed 7" in any direction.

Class 18 : Modern line - skyline drive in Shenandoah. Modern Horizontal Arrangement

Section I: Mini East Asian Arrangements

Class 19: Freestyle - Jiyuka Naturalistic - National Park of American Samoa

Class 20: Moribana - Kenai Fjords
Using low container or compote showing water.

Birmingham Rose Show

Photography Division Rules

JUDGING CRITERIA

Horticulture Photos

The goal here is to show the best qualities of the rose(s), spray, or collection, e.g. brilliant stamens, great form, and so forth. Some photographers will have bloom(s) and leaves in focus, while others will deliberately have foliage out of focus. As long as the rose can be identified, it is not necessary to see the entirety of the bloom/petals. Cropping that enhances the rose(s), while still permitting identification, is allowed and is not to be penalized in any way. Good composition shows the rose(s) to best advantage.

Arrangement Photos

The goal here is to show the best qualities of any type of arrangement and the roses within the arrangement. Good composition shows the arrangement to best advantage. Arranger, if known and if different from the photographer, is to be credited.

Garden & Other Photos

The goal here is to show the best qualities of roses within the garden setting, while depicting the design, character, and elements of the public or private garden. Garden photos should show the use of roses within the structural view of a garden. Photos including people and roses should explore the intrinsic emotional connection that draw people to roses and the great joy and satisfaction that is derived from growing roses or receiving roses.

Classes of Entry

- Class 1** One bloom, Hybrid Tea or Grandiflora, exhibition stage, no side buds.
- Class 2** One spray, Hybrid Tea or Grandiflora, two or more blooms.
- Class 3** One bloom Floribunda or Polyantha.
- Class 4** One spray, Floribunda or Polyantha, two or more blooms.
- Class 5** One open bloom Hybrid Tea or Grandiflora, stamens must show.
- Class 6** One bloom or spray of a Shrub.
- Class 7** One bloom or spray of an OGR (Old Garden Roses).
- Class 8** One bloom or spray of a Climber.
- Class 9** One bloom of a Miniature/Mini-Flora, exhibition stage, no side buds.
- Class 10** One spray of a Miniature/Mini-Flora.
- Class 11** One open bloom of a Miniature/Mini-Flora, stamens must show.
- Class 12** One bloom or spray of any rose(s) not listed in classes 1-11. i.e. species, found, or mystery rose.
- Class 13** Any Style Arrangement or Miniature Arrangement: Design must meet ARS standards. Indicate arranger's name and name of roses, if known. Photo can be any style-Traditional, Modern, Oriental, etc.

- Class 14** Macro: Subjects should be photographed at extreme close range. Photos must include some part of a rose and may include other objects, animals, insects etc.
- Class 15** Rose related activities and garden scenes. Photos must include roses and may include people, pets, and garden art. Include the Show, name of the activity, or people, if known. Use your imagination and have fun with this one.

Birmingham Rose Show Rules Photography Division

Exhibitors are limited to **15 entries per show**. No photograph may be entered more than once.

Exhibitors may enter up to 3 photographs per class, each of a different variety of rose.

Exhibitors need not be members of any rose society but must have taken the submitted photos.

Previous winning photographs, defined as Best in Class, Best in Section, Best in Show, or Medal Certificate winner in an ARS national, district or local show, or first through fourth place in the ARS American Rose magazine contest, may not be entered again in the Birmingham Rose Show.

Rose photographs must be entered under ARS Approved Exhibition Names.

Digital or film photographs are welcome; digital or darkroom enhancements are allowed.

Photographs may be in color or in black and white, or a combination of color and black and white.

All photographs are to be mounted and matted. **Outside dimensions of the mat must be 11" x 14"**. Orientation may be landscape or portrait. **Color of the mat must be BLACK**

Photographs may be no smaller than 5" x 7" and no larger than 8" x 10". Non-standard shapes are welcome (e.g., oval, diamond, triangle, etc.), as long as the mat opening fits within the largest acceptable 8" x 10" opening and is not less than the smallest acceptable 5" x 7" opening, **yet must be mounted on an 11" x 14" black mat.**

The Photography Classification and Placement Committee will place all photographs in the show. Non-matted photographs will not be accepted for either judging or display.

The Show Committee will furnish entry tags that must be filled out completely by the exhibitor. The exhibitor may place nothing identifying the photographer on the front of the photograph.

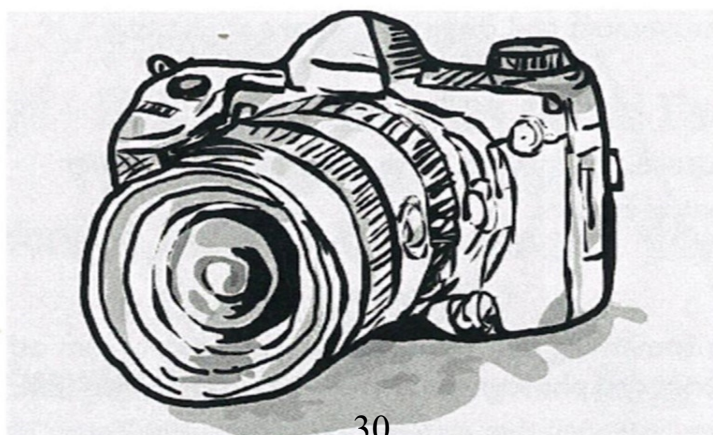
Horticulture and Arrangement Judges may enter photographs in any of the classes.

Judges may ask the clerk to pick up a photo, if necessary, to better view the photo but, under no circumstances, is a photo to be turned to show the exhibitor's name or any other identifying information.

The Show Committee will make every effort to have a Photography Judging Team composed of an ARS Accredited Horticulture Judge, an ARS Accredited Arrangement Judge, and one or two highly experienced photographers.

The Show Committee will exercise due caution in protecting all exhibits, but neither the Birmingham Rose Society, the ARS, nor the Birmingham Botanical Gardens will assume any liability in loss or damage to property.

All photographs are to be left on exhibit until the show closes. All photographs not picked up at the close of show will become the property of the Birmingham Rose Society.



Birmingham Rose Show Photography Division Awards

AWARDS

First, second & third place ribbons or no ribbon may be awarded in each class. Multiple first through third place awards may be awarded in each Section or Class, at the discretion of the judges.

Birmingham Rose Show Award of Photographic Excellence

A best in class may also be awarded at the discretion of the judges.

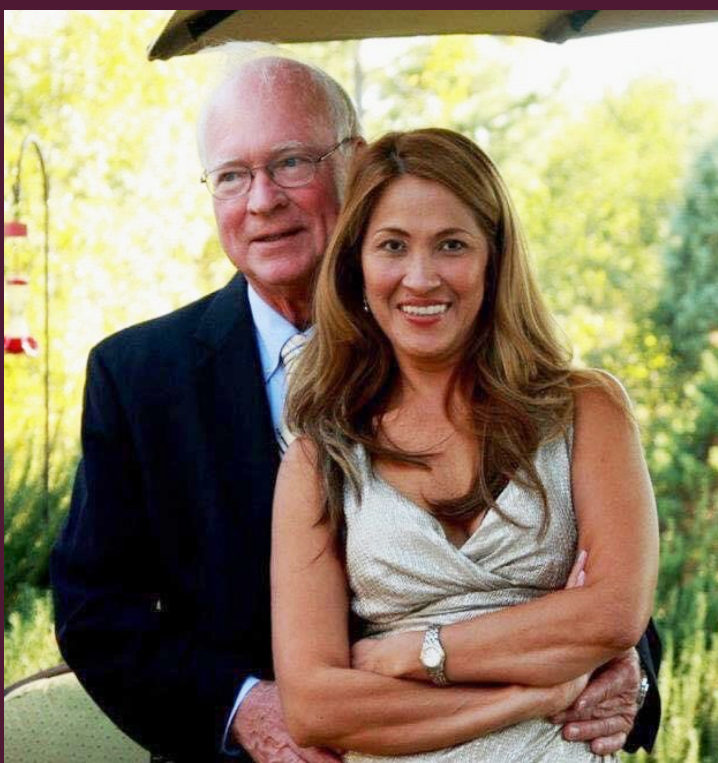
Birmingham Rose Show Best in Show Award

A *Best in Show* winner will be selected from the BRS Award of Photographic Excellence recipients as outlined above. The winning photo must include a rose as its main subject.

The decision of the judges is final.

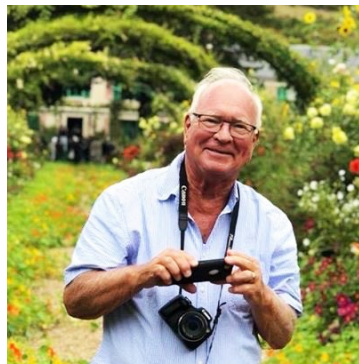
Scorecard for Judging Photography

- | | |
|---|-------------------|
| 1. Conformance | 10 points |
| Conformance to the rules of the schedule. | |
| 2. Specific Sections | 40 points |
| Conformance to the section guidelines | |
| 3. Composition | 15 points |
| Includes point of interest, simplicity, contrast, balance, framing, view point, direction of movement and diagonals, where applicable. | |
| 4. Technique | 15 points |
| Correct exposure, sharp focus for main subject, and other relevant technical factors. | |
| 5. Distinction | 20 points |
| Distinction is something that sets a photograph apart from others in its class. Everything about the photograph is well done, but in addition, its visual impression evokes a visceral feeling that may be intangible—the “wow” factor. | |
| TOTAL | 100 points |



*Harold & Virna Settle
Congratulate
The Birmingham Rose
Society*

*On
Their
69th
Rose
Show!*



Congratulations to

*Jennifer
Phillips*

**Birmingham Rose
Society's 2022**

Bronze Award Winner

**For Exemplary Service
to the BRS**

JAMES & DAISY MILLS

K&M ROSES

301-648-2908

Fortuniana Grafted Roses

For over 25 Years

Hybrid Teas, Exhibition, Old Favorites,
Floribundas, Climbers, Minis & Minifloras.
Own-root and some grafted onto Fortuniana.
Featuring roses from all the major suppliers plus
John Smith, Fred Wright, Whit Wells, David Clemons
and others. As well as the most
popular varieties from Eddie Edwards.
We have David Austins on Fortuniana.
We now have roses from Dave Bang.
"Roses You Must Have!"
We also do custom grafting.
Visit our nursery by appt.

Visit our website: www.kandmroses.com
1260 Chicora River Road
Buckatunna, MS 39322



In Loving Memory of
Mary S. Giles

Mother of
Patrick Sullivan



In Loving Memory of
Nancy Bookout

Aunt of
Eileen, Maureen, Nancy,
Shawn & Michael



In Loving Memory of
Mary Donnie Gilder Johnson

Mother of
Eileen, Maureen, Nancy,
Shawn & Michael



In Loving Memory of
Dwight & Mary E. Hodges

In Loving Memory of
Jerry W. Hamilton

Grandfather & Grandmother
of
George Ann Hamilton
Whitney Hamilton
Ashley H. Brady

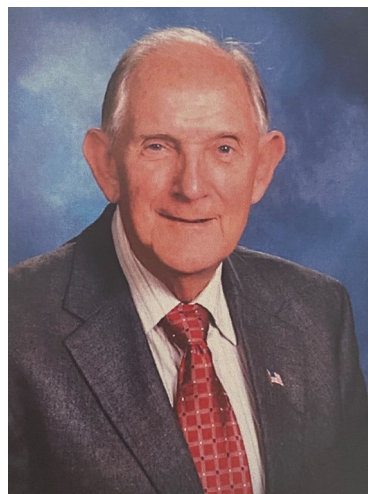
Husband and Father
of
George Ann Hamilton
Whitney Hamilton
Ashley H. Brady



In Loving Memory of
James Purnell
Husband, Father and Grandfather
Of
Gloria Purnell and Family

In Loving Memory of
Glenn Hodge

A devoted
member of the
Birmingham
Rose Society
for many
years.



A fine Rosarian
and devoted
member and
friend
of the
Birmingham
Rose Society
for many years.



Roo's Place

GARDEN & GIFTS

Year-Round

- Landscape Design & Installation
- Hanging Baskets
- Handmade Gifts
- Plant & Shrubs
- Produce Stand
- Concrete Statuary
- Seasonal Items
- Local Honey

Facebook : "Roo's Place" Garden Center

2744 Mt. Olive Road
Mt. Olive, AL 35117

205-285-8282

MYERS PLANTS & POTTERY

- Bedding Plants
- Shrubs
- Trees
- Herbs
- Water Garden & Plants
- Bird Feeders
- Bird Seed
- Gazebos
- Clay Pots
- Concrete Statuaries

205-663-6597

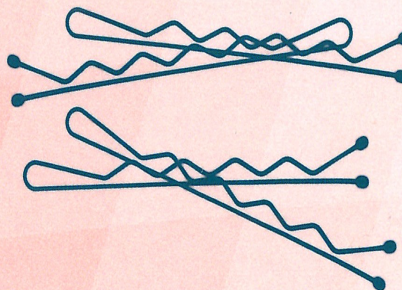
Fax: 205-663-6417

2935 Hwy. 31 South, Pelham, AL 35124

CoCo's Salon
110 Watterson Parkway
Trussville, AL 35173

(205)283-5376
Call or Text
For an Appointment

Cori
CLINE
Owner



NOTES:



CANOPY INSURANCE

info@canopyinsurancecorp.com

ROOTED IN ALABAMA

Canopy Insurance provides employee benefit insurance products to employer groups and membership organizations across Alabama. With a broad suite of offerings, Canopy complements primary health insurance plans and fills the gaps that some of these plans may leave behind.

Canopy works with insurance brokers and agents to ensure that you are covered for all that life may throw at you.

DENTAL
VISION
ACCIDENT
CRITICAL ILLNESS
GROUP LIFE & DISABILITY
VOLUNTARY LIFE & DISABILITY

local solutions
high-touch service model
competitive products

Headquartered in the heart of Birmingham, Alabama, Canopy is an affiliate of Collateral Companies, which collectively have served the needs of Alabama families since 1933. For more information, visit www.CanopyInsuranceCorp.com.

IF WE COULD NAME A ROSE FOR YOU...

Dear Mom,

It's Mother's Day - time for you to Take It Easy.

You started out as Daddy's Little Girl, always pleasing him, especially when your essay on Mister Lincoln took First Prize.

Then things got All-A-Twitter when Dick Clark came along and you began to Sparkle and Shine in a Nearly Wild way.

If you had gone to Broadway, Barbra Streisand would be just a funny girl. You would be the Grande Dame and your story would be "Fame"!

If you had gone Country and Western, you would have supplanted Dolly Parton - as a Double Delight!

Instead, you became our irreplaceable Mom, with your one-and-only Angel Face and a heart Good as Gold that would have impressed St. Patrick or even Pope John Paul.

Nearly every meal, you cooked up something so Dee-Lish - who could blame us for thinking you were Julia Child?

Any way we slice it, Mom, You're The One - a true Home Run with a Touch of Class.

After all of these years, you're still a Knock Out - an absolutely Sunny/Blushing/Double Pink/Double Red Knock Out!

And on this special day, We Salute You.

If we could name a rose for you,
we would call it Peace.

Hanna's is your source for all of these roses,
each grown from bare roots and potted by
hand. *Why not take one home to Mom?*

Hanna's Garden Shop proudly supports the
Birmingham Rose Society's 63rd Rose Show.



HANNA'S
garden shop
EXPERTISE TO GROW ON.

Open Mon-Fri 8am-6pm | Sat 8am-5pm | Sun 11am-5pm 205-991-2939
5485 Highway 280 East, Birmingham, AL 35242 | www.hannasgardenshop.com